



HOSTING YOUR OWN

# SPORTSMEDIA DAY

## INDOOR SPACE

TO HOST A INDOOR SPORTS MEDIA DAY THERE ARE A FEW THINGS WE WOULD BE LOOKING FOR!

\*\*\*INDOOR SESSIONS ALLOW US TO START THE SESSIONS AT ANYTIME OF DAY\*\*\*

## MUST HAVES

1. NEED A MOSTLY DARK SPACE (BEST IF LIGHTS ARE OFF)
2. OPTIMALLY WE ARE LOOKING FOR A 30FTX30FT OPEN SPACE NOT SURROUNDED BY WALLS
3. MUST BE A SPACE THAT ALLOWS A WATER-BASED SMOKE MACHINE USING AN INDOOR SPACE

ANY RENTAL FEES ASSOCIATED WITH THE RENTAL SPACE ARE COVERED BY THE ORGANIZATION OR TACKED INTO THE PER ATHLETE PRICE

## SET-UP

WE PROVIDE ALL OF THE ATMOSPHERE LIGHTING TO YOUR TEAM'S COLORS

WE ASK FOR A MINIMUM OF AN HOUR TO SET UP AND ONLY NEED ABOUT 30 MINUTES TO BREAK DOWN

WE ENCOURAGE PLAYERS TO BRING PROPS, WE DON'T PROVIDE ANY SPORTS EQUIPMENT FOR THE SESSION

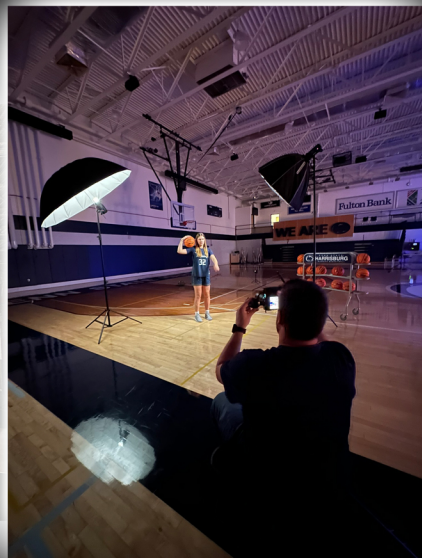
## DELIVERED

EACH ATHLETE WILL RECEIVE...

A MINIMUM OF 2 SOLOS POSES (COULD BE MORE DEPENDING ON TIME)

A TEAM PHOTO

IF TIME ALLOWS OTHER SMALL GROUPS AT THE END







HOSTING YOUR OWN

# SPORTSMEDIA DAY

## OUTDOOR SPACE

TO HOST AN OUTDOOR SPORTS MEDIA DAY THERE ARE A FEW THINGS WE WOULD BE LOOKING FOR!

\*\*\*OUTDOOR SESSIONS HAVE TO START AFTER SUNSET\*\*\*

## MUST HAVES

NEEDS TO BE DARK OUTDOORS

WIND MAY BE A FACTOR FOR THE SMOKE MACHINE

DOES HAVE MORE OF A REEL FEEL BEING ON THE FIELD THE ATHLETE PLAYS ON

CAN USE FIELD EQUIPMENT IN PHOTOS LIKE GOALS, DUGOUTS, FENCES, BASES, FIELD LINES ETC.

ANY RENTAL FEES ASSOCIATED WITH THE RENTAL SPACE ARE COVERED BY THE ORGANIZATION OR TACKED INTO THE PER ATHLETE PRICE

## SET-UP

WE PROVIDE ALL OF THE ATMOSPHERE LIGHTING TO YOUR TEAM'S COLORS

WE ASK FOR A MINIMUM OF 1.5 HOURS TO SET UP AND ONLY NEED ABOUT 30 MINUTES TO BREAK DOWN

WE ENCOURAGE PLAYERS TO BRING PROPS, WE DON'T PROVIDE ANY SPORTS EQUIPMENT FOR THE SESSION

## DELIVERED

EACH ATHLETE WILL RECEIVE...

A MINIMUM OF 2 SOLOS POSES (COULD BE MORE DEPENDING ON TIME)

A TEAM PHOTO

IF TIME ALLOWS OTHER SMALL GROUPS AT THE END

